



# Slotted Tubing Systems

Flexiwall  
Polar-60  
Mini-Ladder  
Alias

# Slotted Tubing Systems

## PAGE NO#

B1 .....	FLEXIWALL System
B2 .....	FLEXIWALL System
B3 .....	FLEXIWALL System
B4 .....	Slotted "H" Rack
B5 .....	Shelf Brackets / Wire Baskets
B6 .....	MINI LADDER
B7 .....	Rectangular Tube Accessories
B8 .....	Slotted Accessories & Hangrail
B9 .....	POLAR "60" System
B10 .....	POLAR "60" Gondola
B11 .....	POLAR "60" Gondola
B12 .....	POLAR "60" Table
B13 .....	Oval Tube Accessories
B14 .....	Oval Tube Accessories
B15 .....	POLAR "60" Faceouts & Accessories
B16 .....	POLAR "60" Shelving & Cabinets
B17 .....	Shelf Brackets
B18 .....	Oval Tube Accessories
B19 .....	Shelving
B20 .....	Shelving
B21 .....	ALIAS System
B22 .....	ALIAS Wall System
B23 .....	ALIAS Wall Panels
B24 .....	ALIAS Gondola Fittings

## WALL CHANNEL

A) The aluminium extrusion is the basic element of the FLEXIWALL system which allows for an infinitely positioning of uprights.

- The uprights (B) are simply bolted on to a sliding, threaded plate that slides into the extrusion. Once the upright is fastened into the wall channel, the bottom leveler (C) adjusts so that most of the load bearing is transferred to the floor.

- The wall spacer (D) holds the upright parallel to the wall and allows for it to be installed over existing skirtings. **IMPORTANT:** Wall channel should be screwed directly onto wall studs on framed wall constructions.

**AP5401** - Length - 3700mm - Mill finish.

**AP5401P/C** - Length 3700mm

Powdercoated to any colour of your choice.



## HEAVY DUTY UPRIGHT

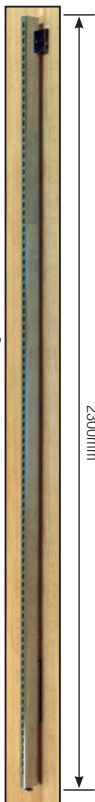
51mm x 25mm tubing with 6mm wide slot. Allows for side by side placement of brackets. Pitch 25mm.

**AP5420** - 2400mm high

Available in raw steel (RAW),  
Chrome (CHR), Satin Chrome (SC)  
or powdercoat to your specification (P/C).

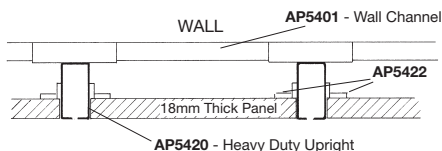
**AP5421** - upto 3600mm high - these are manufactured to your specific height. Supplied with 1 x channel mounting bracket welded to back of upright at 2300mm A.F.L. (unless otherwise specified). Available in raw steel (RAW), or powdercoat to your specification (P/C).

Heavy duty uprights are also available with panel channels for plain melamine or PLANKWALL infill panels - see p.B3.



## PANEL MOUNTING BRACKETS

**AP5422** - 2 piece bracket set - supply only. (We can supply you a complete kit with uprights and timber panels with fitted brackets - enquire for pricing).



## FLOOR-CEILING POSTS

Our new floor-ceiling system provides additional scope for the Flexiwall system. The standard aluminium wall channel is fixed onto the ceiling, while a special sliding bracket allows for a quick and simple fastening method. Height adjustment is obtained by means of a leveller on the bottom of the post which fits into a special floor -mounted plate.

Uprights are available in chrome or powdercoated to your specified colour. They are slotted on one or both sides of the tube to provide full merchandising capabilities in a store window or dividing wall application.

You will use the Flexiwall floor - ceiling posts in store windows giving you full merchandising capability for internal dividing walls.

The use of the heavy duty aluminium track allows this system to be safely used on suspended ceilings by attaching to the ceiling 'T' bar grid.



## MOUNTING KIT

Includes:

- sliding bracket with fastening plate and screws
- threaded tubing insert and leveler
- floor - mounting plate

**AP5405**



TOP DETAIL



BOTTOM DETAIL

## SLOTTED TUBING

51mm x 25mm tubing with 6mm wide slots to allow for side by side placements of brackets.

Slotted 2 sides

**AP9224** - 2400mm

**AP9222** - 3600mm

Slotted 1 side

**AP9225** - 2400mm

**AP9221** - 3600mm

Available in rawsteel (RAW)  
Chrome Plated (CHR) or  
powdercoat to specification.



## WALL MOUNT BRACKET

Heavy-duty 2 piece chrome bracket eliminates the need for the aluminium wall channel. Mount round flange onto wall. Screw plate onto back of slotted tubing and fasten together by tightening grub screws.



**AP9230** (2 brackets recommended per upright)

Available in chrome finish.

## BOTTOM LEVELLER

For use with slotted tubing when using wall-mounted brackets. Transfers the weight loading to the floor.

**AP9231**



## SLOTTED TIMBER UPRIGHT

The strength of the steel slotted tubing with the luxurious feel of a genuine 'Tasmanian Oak' surround. Designed for use with the AP9230 Wall mount bracket (2 recommended per upright) and AP9231 bottom leveller - purchased separately. Pitch - 25mm.



**AP5455** - 2400mm

**AP5456** - 3600mm (may be cut to desired length)

## SLOTTED STRIPPING - WALL MOUNT

Heavy weight steel with countersunk screw holes 230mm apart. Pitch 25mm.

### Single Slot

19mm wide x 13mm deep

**AP5250/4** - 1200mm

**AP5250/6** - 1800mm

**AP5250/7** - 2100mm

**AP5250/8** - 2400mm

### Double Slot

32mm wide x 13mm deep

**AP5255/4** - 1200mm

**AP5255/6** - 1800mm

**AP5255/7** - 2100mm

**AP5255/8** - 2400mm

Available in Chrome (C),  
Black (B) and White (W)



## CONCEALED SLOTTED STRIPPING

Our concealed steel wall stripping allows you to create functional walls without the visible distraction of standard slotted stripping.

- Can be used with melamine panel infills for a range of decorative effects or flushed-in plasterboard so that the strip becomes virtually invisible.
- Can be installed directly to stud wall before plasterboard fixing with a 4mm wide space in between - concealed stripping simply attaches directly onto the studs with the space between to allow for the brackets to slot into.
- Concealed steel stripping offers superior strength for all fixture applications, especially where extra load bearing is anticipated.
- When used with 18mm melamine, various colour panels can be interchanged to create a backdrop that can change according to your requirements.



**AP5430/4** - 1200mm Length

**AP5430/8** - 2400mm Length

Pitch 25mm.



## HEAVY DUTY UPRIGHT WITH PANEL CHANNEL

51 x 25mm tubing with 6mm wide slots for side by side bracket placement. Pitch 25mm. Channels can be attached to one or both sides of upright for holding plain melamine or PLANKWALL panels. Channel may be powdercoated to match colour.

**AP5425/1** - 2400mm high with 1 channel. Specify LH or RH end.

**AP5425/2** - 2400mm high with 2 channels.

Available in raw steel (RAW), chrome (C) or satin chrome (SC) slotted tube with powdercoated (P/C)

**AP5426/1** - Custom height of up to 3600mm with 1 channel. Specify LH or RH end. Specify height.

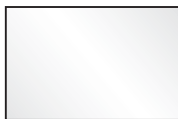
**AP5426/2** - Custom height of up to 3600mm with 2 channels. Specify height.

Available in raw steel (RAW) or powdercoated (P/C).

# SLOTTED 'H' RACK

## SLOTTED 'H' RACK

A totally versatile, free-standing merchandiser. Heavy-duty slotted steel frame in a choice of popular finishes. Slotted end frames to give all-round merchandising capability. Can be merchandised with our complete range of FLEXIWALL accessories – shelving, hangrails, facouts, baskets, etc...



**AP5555C** Bright Chrome



**AP5555SC** Satin Chrome



**AP5555B** Black



Overall size: 1275mm (L) x 625mm (W) x 1200 (H).

## INFILL PANELS

For complete merchandising flexibility, we can provide a complete range of infill panels for both decorative and functional purposes. Choose from the following options:

## MESH PANELS

(only available on end panels)

Allows you to display hangsell, etc...on ends while still maintaining open, see through stand.



**AP5556** - Complete rack, including 2 x mesh infill panels. Overall size - 1275mm (L) x 760mm (W) x 1200 (H)

## CASTORS (Set of 4)

Heavy-duty twin-wheeled swivel castor. 2 castors have wheel locks. Thread size 3/8".



**AP5054/4**

## MELAMINE INFILL PANELS

Upgrade your rack with timber panels to create a fixture that will enhance the merchandise. Available in our full range of standard colours in plain or grooved panels. Panels are retained in a top and bottom channel that is fixed to the rack.



### Plain Panels

### **AP5557**

Please Note:

Panels are priced individually, i.e. each section. Order as many as your require per each rack. For example, you may wish to have the 2 centre panels with infills and leave the ends open.

Panel pricing includes installation of top and bottom channel.

### Slatwall Panels (for ends only)

### **AP5567**

(including aluminium inserts)

## STRAIGHT SHELF BRACKETS

Pitch - 25mm.



- |                           |                           |
|---------------------------|---------------------------|
| <b>AP5258</b> - 150mm (L) | <b>AP5262</b> - 350mm (L) |
| <b>AP5259</b> - 200mm (L) | <b>AP5263</b> - 400mm (L) |
| <b>AP5260</b> - 250mm (L) | <b>AP5264</b> - 450mm (L) |
| <b>AP5261</b> - 300mm (L) | <b>AP5265</b> - 500mm (L) |

Available in chrome (C), black (B), white (W) or satin chrome (SC).

## STRAIGHT SHELF BRACKET

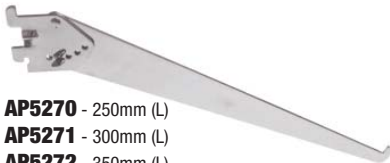
With lip on top for attaching timber shelves. Pitch - 25mm.



- |                                     |                                   |
|-------------------------------------|-----------------------------------|
| <b>AP5265 L &amp; R</b> - 300mm (L) |                                   |
| <b>AP5266 L &amp; R</b> - 350mm (L) | Sold individually - not in pairs. |
| <b>AP5267 L &amp; R</b> - 400mm (L) | Available in chrome finish.       |

## ADJUSTABLE ANGLE BRACKETS

Adjust from 15° up, 15°, 30°, 45° down. Pitch - 25mm.



- |                           |
|---------------------------|
| <b>AP5270</b> - 250mm (L) |
| <b>AP5271</b> - 300mm (L) |
| <b>AP5272</b> - 350mm (L) |

Available in chrome finish.

## SHELF STOP

50mm long overall - to retain sloping shelves.



- AP817**  
Finish: Chrome.

## SHELF CLIP & GROMMETS



**AP807** Clear plastic clip for attaching melamine shelf with 6g x 16mm screw.

**AP808** Clear plastic clip with grey rubber grommet inserted. May be used with glass or melamine shelves.

**AP809** Grey rubber grommet.

## WIRE SHOE SHELF

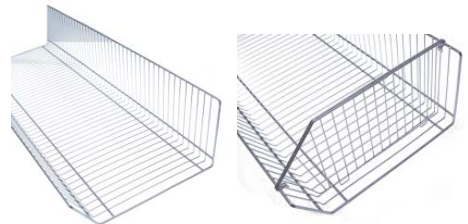
Wire shelf with adjustable angle brackets has 25mm front lip as well as a heel stop bar. An ideal method of mass merchandising all types of footwear on wall systems or our free-standing "H" rack gondola.  
Pitch - 25mm.



- AP5278**  
1200mm long.  
Available in chrome finish.

## LONG WIRE BASKET

These open end wire baskets attach to the FLEXIWALL system with separate brackets. Hanging off the vertical side will give you a horizontal display, while hanging off the angled side will provide a sloping display. Separate dividers can be placed anywhere along the length of the basket and provide extra rigidity and product separation.



## BASKETS

- AP931**  
1200mm (L) x 300mm (W).  
**AP933**  
1200mm (L) x 400mm (W).  
Basket height - 220mm.

## BASKET DIVIDERS

- AP936** - 300mm to suit AP931.  
**AP938** - 400mm to suit AP933.  
Available in chrome finish.

## BRACKET

- AP940L** } Pitch - 50mm.  
**AP940R**

- AP941L** } Pitch - 25mm.  
**AP941R** }  
Available in chrome finish.



# MINI LADDER



## MINI LADDER

The MINI-LADDER system offers you an appealing architectural structure in wall mounted or free-standing configurations, allowing exceptional versatility of arrangement combined with the strength of welded steel construction.

One of the key benefits of the MINI-LADDER system is the ability to accept most Plankwall accessories, increasing your design flexibility while allowing you to draw on existing inventory of standard fittings.

You can select from the standard Bright Chrome finish or alternatively we can supply the Raw steel finish for custom powder-coating to you specified colour. Your MINI-LADDERS can also be supplied with timber cladding in genuine Tasmanian Oak Timber with a durable clear lacquer finish for an upmarket presentation.

The MINI-LADDER system utilises the Flexiwall aluminium wall track to allow uprights to be positioned without drilling new holes into the wall.

## WALL UPRIGHT

Overall height - 2400mm with wall-mounting brackets for aluminium wall track and levellers onto the floor.

### AP5440

Available in chrome (C) or powdercoat (P/C) to specification.



## TIMBER UPRIGHTS

Overall height - 2400mm with wall-mounting brackets for aluminium wall track and levellers onto the floor.  
\*Genuine Tasmanian Oak timber with clear lacquer finish.

### AP5448

With powdercoated Mini Ladder (specify colour).

### AP5449

With chrome Mini Ladder.



## FREE-STANDING POST

On weighted metal base. Use singly or in multiple joined with shelving, hangrails, etc. Overall height - 1800mm. IMPORTANT NOTE: Free-standing posts should have evenly distributed load on either side.



### AP5111

Available in chrome (C) or powdercoat to your specification (P/C).

#### TIMBER POSTS

### AP5114

With chrome finish post.

### AP5112

With powdercoated post (specify colour).



## 1-PIECE CROSSBARS

Extends 60mm from face of upright.  
38 x 13mm tubing. Pitch - 25mm.



**AP5227** - 600mm (L)

**AP5228** - 900mm (L)

**AP5222** - 1200mm (L)

Available in chrome (C) or satin chrome (SC).

## CROSSBAR DISPLAY PRONGS



**AP5125** - 150mm (L)

**AP5126** - 250mm (L)

Available in chrome (C) or satin chrome (SC).

## CROSSBAR FACEOUT



**AP5120/06** - 150mm (L)

**AP5120/12** - 300mm (L)

**AP5120/16** - 400mm (L)

Available in chrome (C) or satin chrome (SC).

## CROSSBAR RISER WATERFALL

Extends 200mm high, sloping arm 300mm long with 6 cube stops.



**AP5129**

Available in chrome finish.

## CROSSBAR WATERFALL FACEOUT

7 ball stop. Length 400mm.

**AP5121**

Available in chrome (C)  
or satin chrome (SC).



## COMBINATION CROSSBAR/HANGRAIL

Pitch - 25mm.



**AP5223** - 900mm

Available in chrome finish.

## CROSSBAR LINGERIE FACEOUT

12mm Dia tube with 25mm front disc Length - 300mm.

**AP5124**

Available in chrome finish.



## COMBINATION CROSSBAR/HANGRAIL

Pitch - 25mm.



**AP5224** - 900mm

Available in chrome finish.

## CROSSBAR STEPPED FACEOUT

Overall length - 400mm.

**AP5123**

Available in chrome (C)  
or satin chrome (SC).



## STRAIGHT FACEOUT

Pitch - 25mm.



**AP5210** - 300mm

**AP5210/350** - 350mm

**AP5211** - 400mm

Available in chrome finish.

## HANGRAIL TUBING & END CAP

25mm dia chrome tube.



**AP846/2** - 700mm

**AP846/5** - 1600mm

**AP846/6** - 1830mm

**AP846/8** - 2440mm

**AP849**

## WATERFALL FACEOUT

7 ball stop. Length 400mm.

Pitch - 25mm.



**AP5215**

Available in chrome finish.

## RECTANGULAR TUBING & END CAP

38mm x 13mm.

**AP853/6** - 1830mm

**AP853/8** - 2440mm

**AP853/A** - Push in end cap  
- 20mm x 50mm

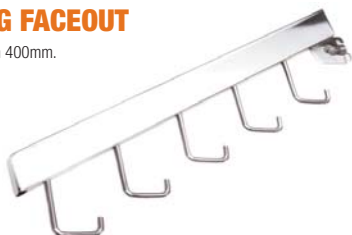


Available in chrome (C) or black (B)

## HANDBAG FACEOUT

5 "J" Hook Length 400mm.

Pitch - 25mm.



**AP5216**

Available in chrome finish.

## RECTANGULAR TUBING BRACKETS

To suit 38 x 13 tubing. Pitch - 25mm.



**AP5218** - 75mm (for crossbar)

**AP5219** - 300mm (for side hanging rail)

Available in chrome (C) or black (B).

## U-SHAPE HANGRAIL

38 x 12mm rectangular tube.

Pitch - 25mm.



**AP5225** - 600mm

**AP5226** - 900mm

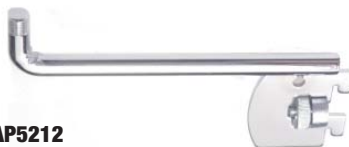
**AP5221** - 1200mm

Available in chrome (C) or satin chrome (SC).

## SIGNHOLDER BRACKETS

For our chrome ticket frames (see PLANKWALL section page ??).

Extends 125mm from slotted tubing. Pitch - 25mm.



**AP5212**

Available in chrome finish.

## HANGRAIL BRACKET

For 25mm Dia chrome tubing.

Pitch - 25mm.



**AP5217** - 300mm

Available in chrome finish.

## GRID ATTACHMENT BRACKETS

For supporting wire grid panels between uprights.

Minimum 4 brackets per panel. Pitch - 25mm.

**AP5213**

Available in chrome finish.



## POLAR 60 SLOTTED TUBE

60mm Dia. heavy duty steel tube with double slots around 4 sides.  
Pitch - 50mm.



**AP6418** - 2400mm

**AP6420** - 2950mm

Available in raw steel (RAW), chrome plated (CHR)  
or powdercoated to specification (P/C)

## PLASTIC TUBE FITTINGS

Black plastic.

Tube Cap



**AP6400**

Threaded  
Tube Cap



**AP6401**

Leveller  
M10 Thread



**AP6402**

## METAL TUBE FITTINGS

Available in raw steel (RAW)  
or powdercoated to specification (P/C).

Tube Cap



**AP6410**

Threaded  
Tube Cap



**AP6411**

Leveller  
3/8" W Thread



**AP6412**

## WALL MOUNT FITTING

Fixes upright to wall 25mm spacing - wall to back of upright.  
Pitch - 50mm.



**AP6381**

Available in chrome finish.

## METAL FLANGE FITTING

133mm dia. flange with  
tubular stub to fit inside  
slotted tubing.



**AP6398**

Available in raw steel (RAW)  
or powdercoated to specification (P/C).

## ADJUSTABLE WALL FIXING

Fixes upright to wall from - 300mm.  
Pitch - 50mm.



**AP6386**

Available in chrome finish.

## FLOOR-CEILING SLEEVES

Black plastic.

Ceiling Sleeve



**AP6406**

Floor Sleeve



**AP6407**

## FIXED WALL SPACER

Fits onto top of tube at a spacing of 350mm overall (wall to front of tube).



**AP6388**

Available in "Bright Silver" powdercoat finish.

## CASTORS (Set of 6)

Heavy duty twin-wheel swivel castor.  
2 castors in the set of 6 have wheel  
locks 3/8" thread



**AP5054/6 Set of 6**



## LEG BRACKET

Heavy steel construction with locking feature the secures leg to upright. Use 4 legs to create free-standing poles.



**Single leg on pole**  
(used for certain wall mounting applications)



**Four legs on pole**  
(used for free-standing poles, etc...)



**Double legs on pole**  
(used for tables, gondolas, etc...)



### AP6255

Individual leg with locking bracket and screws. Available in raw steel (RAW) or powdercoated to specification (P/C).

## GONDOLA TUBING

Slotted tubing with welded bottom threaded cap for adjustable foot or castor.



### AP6258 - 1270mm

Available in raw steel (RAW) or powdercoat to specification (P/C).

## DECORATIVE CAPS



Metal

### AP6419

Available in chrome plated (CHR) or powdercoated to specifications (P/C).



Timber (Beech)

### AP6414



Timber (Beech)

### AP6416



Timber (Beech)

### AP6415



Timber (Beech)

### AP6417

## TIMBER INFILL

18mm thick melamine panel for gondola.



### AP6382 - 1135mm (W) x 1195mm (H)

Available in standard colour range - specify colour.

## GONDOLA TOP & BOTTOM CANNEL

To suit 18mm thick panel for tubing at 1200mm centres.



### AP6256T

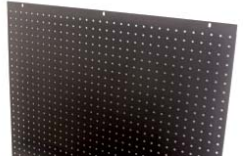
### AP6256B

Available in raw steel (RAW) or powdercoat to specification (P/C).



## PERFORATED INFILL PANEL

Decorative perforated metal panel mounts onto threaded plates on the shelf and crossbar.  
Size - 820mm (W) x 1250mm (H).



### AP6155

Available in your selected powdercoat colour

## CROSS-BAR

With threaded holes for attaching perforated panel. Designed to fit between uprights at 900mm centres.



### AP6165

Available in your selected powdercoat colour (please specify).

## SLOTTED UPRIGHTS

60mm dia welded "T" leg with slotted upright tubing. Base bar has threaded inserts for 3/8" castor or leveller attachment.



**AP6150** - 800mm (W) x 1300mm (H)

**AP6151** - 500mm (W) x 1650mm (H)

Available in your selected powdercoat colour (please specify).

## SIGNAGE BRACKET

Fits inside 60mm dia tube, has channel to take Ali-info frames to display signage. Channel - 200mm long with grub screws to allow for tightening onto frame.



### AP6166

Available in your selected powdercoat colour (please specify).

## MERCHANDISING END FRAME

"U" Shaped frame to mount onto the pole for hangsell merchandising or for an extra shelf. Clever rounded design protects the merchandise when it is on the end of a gondola.  
Size - 900mm x 300mm.



### AP6170

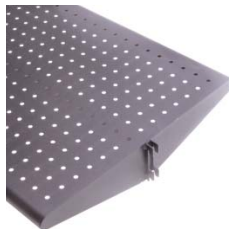
**AP6170**  
with display prongs  
(AP6210-3)

**AP6170 &  
AP6216**

Available in your selected powdercoat colour (please specify).

## CENTRAL SHELF

Perforated metal construction with bulbosed front edges. Designed to go in between uprights at 900mm centres. Has centre stiffening rib with threaded holes.



**AP6160** - 830mm x 400mm

# POLAR 60 TABLE



POLAR 60 Table components shown with optional castors and additional merchandising shelf - **AP6363** (p.B17) & **AP6752** (p.B19).

## TABLE BRACKET

Fits into top of slotted tube, screws to underneath of table top.



### AP6405

Available in raw steel (RAW) or powdercoat to specification (P/C).

## TABLE TOP



### AP6458

Specify colour.  
Available in most standard ADP colours.

## POLAR 60 SLOTTED TUBE

Height - 770mm. Includes floor leveller.



### AP6258

2 required per table.  
Available in raw steel (RAW) or powdercoat to specification (P/C).

## PANEL CHANNELS

To suit 18mm thick panels. Ideal for supporting double-sided grooved PLANLWALL panels between POLAR 60 uprights.



### AP6260

Pair of channels. 1195mm (L).  
Available in chrome finish.

## GONDOLA TOP & BOTTOM CANNEL

To suit 18mm thick panel for tubing at 1200mm centres.



### AP6256T

### AP6256B

Available in raw steel (RAW) or powdercoat to specification (P/C).

## PANEL CHANNELS

To suit 18mm thick panels in between POLAR 60 uprights.



### AP6262

Set of 4 channels. 1095mm (L).  
Available in chrome finish.

## INFIL PANEL (optional)

18mm thick melamine panel -  
1135mm (W) x 395mm (H).



### AP6383

Specify colour.  
Available in standard ADP colours.

## TORSO FITTING

Suitable for all torsos with neck fitting.  
See page D6/7.



### AP6265

## OVAL TUBE CROSSBAR

Pitch - 25/50mm.



**AP6227** - 600mm (L)

**AP6228** - 900mm (L)

**AP6222** - 1200mm (L)

Available in chrome finish.

## DISPLAY PRONGS

To suit oval tube.



**AP6210** - 100mm (L)

**AP6211** - 150mm (L)

**AP6212** - 200mm (L)

**AP6213** - 250mm (L)

Available in chrome finish.

## OVAL CROSSBAR STRAIGHT FACEOUT



**AP6205** - 300mm (L)

**AP6208** - 400mm (L)

Available in chrome finish.

## COMBINATION HANGRAIL/CROSSBAR

Oval tube. Pitch - 25/50mm.



**AP6203** - 900mm

**AP6204** - 1200mm

Available in chrome finish.

## OVAL CROSSBAR WATERFALL FACEOUT

7 pin stops Length 300mm.



**AP6207**

Available in chrome finish.

## COMBINATION CROSSBAR/HANGRAIL

Oval tube. Pitch - 25/50mm.



**AP6191** - 900mm

**AP6192** - 1200mm

Available in chrome finish.

## OVAL CROSSBAR WATERFALL FACEOUT

10 pin stops Length 400mm.



**AP6209**

Available in chrome finish.

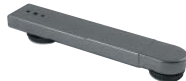
## BASE LEGS

80mm wide x 30 high.

Double Sided



Single Sided



**AP6240** - 420mm

**AP6242** - 420mm

**AP6243** - 640mm

**AP6244** - 790mm

Available in aluminium grey finish.

## STEPPED FACEOUT

Overall length - 400mm.



**AP6206**

Available in chrome finish.

## CIRCULAR BASE



**AP6245** - 490mm dia.

Available in aluminium grey finish.



# OVAL TUBE ACCESSORIES

## OVAL TUBE HANGRAIL

Pitch - 25/50mm.

**AP6225** - 600mm (L)

**AP6226** - 900mm (L)

**AP6221** - 1200mm (L)

Available in chrome finish.



## WIRE SHELF FRONT

45mm high retainer for timber shelves.  
Fits into pre-drilled holes in shelf.

**AP6322** - 600 x 45mm

**AP6323** - 900 x 45mm

**AP6324** - 1200 x 45mm

Available in chrome finish.



## PERFORATED METAL SHELVES

Bolts onto Oval Tube Hang rails (above).

Allows for combining a display shelf with hang rail.

**AP6215** 570mm x 230mm

**AP6216** 870mm x 230mm

Finish: Chrome



**AP6226 + AP6216**



## WIRE SHELF DIVIDER

Fits into pre-drilled timber shelf.

Size - 300mm (L) x 220mm (H).

**AP6320**

Available in chrome finish.



The wire shelf fronts and dividers above fit into drilled holes into any timber shelf. We can provide you with pre-drilled holes in your selected shelf. Simply select your shelf, add the pricing of the drilling below and purchase the required quantity of shelf fronts and dividers.

**AP6332** - Drilling for 600 x 400mm shelf

**AP6333** - Drilling for 900 x 400mm shelf

**AP6334** - Drilling for 1200 x 400mm shelf

Pre-drilling of shelves allows for adjustable divider spacing at 50mm increments.

## GLASS SHELF SUPPORT

Clips onto oval tubing for supporting a glass shelf.

**AP6201** (sold individually)

Finish: Chrome with clear glass cushion



## WIRE SHELF W/LIP

Has brackets to attach to the shelving brackets on p. B17.  
Lip height - 35mm.

**AP6342** - 600 x 415mm

**AP6343** - 900 x 415mm

**AP6344** - 1200 x 415mm

Available in bright silver powdercoat finish.



## GLASS SHELF

Another way to combine a display shelf with hang rail.

**AP6214** 565mm x 230mm    **AP6218** 865mm x 230mm



Glass shelf only – Order oval tube hang rails (#AP6225/6) and glass shelf supports (#AP6201) separately.

# POLAR 60 FACEOUTS & ACCESSORIES

B15

## STRAIGHT FACEOUT

For POLARIS uprights. Oval tube. Pitch - 50mm.



**AP6478/12** - 300mm

**AP6478/16** - 400mm

Available in chrome finish.

## SHELF BRACKET

For POLARIS uprights. For use with circular shelves.  
2 piece design including suction cups for securing glass.



**AP6467**

Available in chrome finish.

## WATERFALL FACEOUT

For POLARIS uprights. 7 pin, 300mm long. Oval tube. Pitch - 50mm.



**AP6476**

Available in chrome finish.

## CIRCULAR GLASS SHELVES

Use with AP6467 bracket for mounting onto POLARIS uprights.  
Size - 400mm dia.



**AP6468**

## WATERFALL FACEOUT

For POLARIS uprights. 10 pin, 450mm long. Oval tube. Pitch - 50mm.



**AP6479**

Available in chrome finish.

## SHELF BRACKET

For POLARIS upright. For use with melamine shelf.  
Screw attachment.



**AP6466**

Available in chrome finish.

## STEPPED FACEOUT

For POLARIS uprights. Overall length 400mm. Oval tube. Pitch - 50mm.



**AP6477**

Available in chrome finish.

## MELAMINE SHELF

Use with AP6466 bracket onto POLARIS uprights. Size - 350 x 270mm.



**AP6469**

Available in standard colour range - specify colour.

## CURVED HANGRAIL

For POLARIS uprights.  
Overall length 500mm Oval tube.  
Pitch - 50mm.



**AP6475**

Available in chrome finish.

## SLOPING METAL SHELF

60° Sloping metal shelf for POLARIS Upright, for  
single shirt display, books etc.  
Size - 270mm (W) x 350mm (H).



**AP6470**

Available aluminium grey finish.

## MOUNTING BRACKETS

For mounting cabinets in front of POLARIS uprights.  
Use 4 brackets per cabinet.

**AP6238** - Sold individually.

Available in raw steel (RAW), chrome (C) or powdercoat finish (P/C)

## CENTRAL STRAIGHT BRACKETS

For mounting cabinets and shelving in between POLARIS uprights.



**AP6421** - Sold in pairs.

Available in chrome (C) or powdercoat finish (P/C).

## CENTRAL SLOPING BRACKETS

For mounting shelving in between POLARIS uprights.



**AP6424** - Sold in pairs.

Available in chrome (C) finish.

## PERFORATED METAL SHELF

Square punched holes with bullnose front edge.  
Pitch - 50mm



**AP6250** - 900mm (L) x 300mm (W)

**AP6251** - 900mm (L) x 400mm (W)

**AP6253** - 1200mm (L) x 300mm (W)

**AP6254** - 1200mm (L) x 400mm (W)

Available in raw steel (RAW) or  
powdercoat finish (P/C).

## THREE-DRAWER MODULE



**AP6444/2** - 600mm (L) x 450mm (W) x 450mm (H)

**AP6444/3** - 900mm (L) x 450mm (W) x 450mm (H)

**AP6444/4** - 1200mm (L) x 450mm (W) x 450mm (H)

## CUPBOARD MODULE

With hinged doors.



**AP6448/2** - 600mm (L) x 450mm (W) x 450mm (H)

**AP6448/3** - 900mm (L) x 450mm (W) x 450mm (H)

**AP6448/4** - 1200mm (L) x 450mm (W) x 450mm (H)

## TIE UNIT

Open front pigeon holes with  
solid back 7 compartment  
wide x 7 high.



**AP6449** - 900mm (L) x 200mm (W) x 900mm (H)

Specify melamine colour.

## SHIRT/FOLDED KNITWEAR UNIT

Open front pigeon holes with solid back 3 compartment wide x 3 high.

**AP6450** - 900mm (L) x 400mm (W) x 900 (H)

Specify melamine colour.



## SHELF BRACKET

2-position hook for horizontal display or 20° downslope.



**AP6359** - 200mm (pair of brackets)

**AP6361** - 300mm (pair of brackets)

**AP6363** - 400mm (pair of brackets)

Available in chrome finish.

## SHELVING SUPPORTS

Support rails for glass shelves. These mount onto shelf brackets.



**AP6352** - 600mm (pair of supports)

**AP6353** - 900mm (pair of supports)

**AP6354** - 1200mm (pair of supports)

Available in chrome finish.

## STRAIGHT SHELF BRACKET



**AP6365** - 500mm (pair of brackets)

Available in chrome finish.

## SHELVING SUPPORTS

Heavy duty support rails for melamine shelves. These mount onto the shelf brackets.



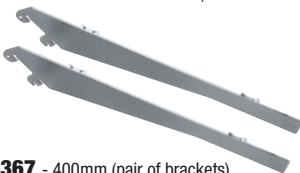
**AP6355** - 900mm (pair of supports)

**AP6356** - 1200mm (pair of supports)

Available in chrome finish.

## SLOPING SHELF BRACKET

2-position hook for 45° or 60° downslope.

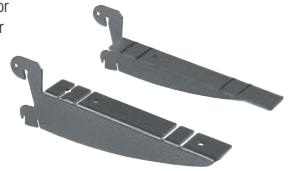


**AP6367** - 400mm (pair of brackets)

Available in chrome finish.

## DECORATIVE SHELVING BRACKETS

Low profile shelf bracket for screw fixing timber shelf or attaching glass shelf with aluminium profile (see p. B20).

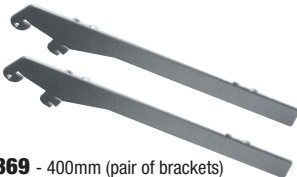


**AP6372** - 180mm (pair of brackets)

Available in chrome finish.

## SLOPING SHELF BRACKET

2-position hook for 60° or 75° downslope.



**AP6369** - 400mm (pair of brackets)

Available in chrome finish.

## DECORATIVE SHELVING BRACKETS

2 position hook for horizontal display or 20° downslope.



**AP6373** - 350mm (pair of brackets)

Available in chrome finish.

## BOOKSHELF BRACKETS

2-position hook for horizontal or upslope display.



**AP6370** - 200mm (pair of brackets)

Available in chrome finish.

**AP6374** - 300mm (pair of brackets)

Available in chrome finish.

## BOOKSHELF BACK PANEL

Sheet-metal back panel for bookshelf brackets.



**AP6371** - 900mm x 110mm

Available in chrome finish.

# OVAL TUBING ACCESSORIES

## OVAL TUBING

30mm x 15mm.



**AP6198** - 3000mm

Available in chrome finish.

## SHELF SUPPORTS

Brackets for attaching glass shelf to brackets.



**AP6217** - Set of 4 brackets

Available in chrome finish.

## OVAL TUBING END CAP

With raised top to retain hangers.

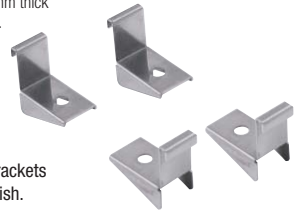


**AP6200**

Available in metallized chrome plastic.

## SHELF SUPPORTS

Brackets for attaching 18mm thick timber shelves to brackets.



**AP6199** - Set of 4 brackets

Available in chrome finish.

## CROSSBAR BRACKETS

For variable attachment of oval tubing.



**AP6219** - 75mm

(pair of brackets)

Available in chrome finish.

## OVAL TUBE SUPPORTS

For mounting hangrail in between POLARIS uprights.



**AP6195**

Available in chrome finish.

## HANGRAIL BRACKETS

For variable attachment of oval tubing for side hanging.



**AP6220** - 270mm (pair of brackets)

**AP6220A** - 330mm (pair of brackets)

Available in chrome finish.

## OVAL TUBE SLEEVES

Covers ends of hangrails on AP6195brackets above.



**AP6196**

Black plastic.

## HANGRAIL/SHELF BRACKETS

For variable attachment of oval tubing combined with a timber or glass shelf using shelf supports above.



**AP6223** - 435mm (pair of brackets)

Available in chrome finish.

## TICKET FRAME CLIP

Clips onto oval tubing. Use with ticket frames in PLANKWALL section p.14.



**AP6197**

Clear plastic.

## MELAMINE SHELF

19mm thick MDF board edged on all sides with 2mm thick ABS 'tough edge' to resists knocks and chips.

Color groups:

- 1) White (WH)
- 2) Maple (MAP), Beech (BEE), Rosewood (ROS), Magnolia (MAG), Grey (GRY)
- 3) Black (BLK)
- 4) Yellow(YEL), Red (RED) Baltic Blue (BLU)  
Orange (ORA Roble (ROB) Wenge (WEN) Aluminium (ALU)



**AP6740** - 600mm x 240mm

**AP6741** - 600mm x 300mm

**AP6742** - 600mm x 400mm

**AP6743** - 600mm x 500mm

**AP6745** - 900mm x 240mm

**AP6746** - 900mm x 300mm

**AP6747** - 900mm x 400mm

**AP6748** - 900mm x 500mm

**AP6750** - 1200mm x 240mm

**AP6751** - 1200mm x 300mm

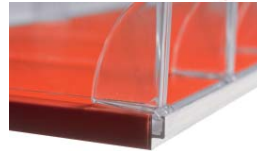
**AP6752** - 1200mm x 400mm

**AP6755** - 1200mm x 500mm

Specify colour.

## MELAMINE SHELF

With aluminium front rail installed along front and back edge for use with divider clips and acrylic dividers below.



Order as shelf number with the suffix "B" eg. AP6745B (specify colour).

## DIVIDER SUPPORT CLIP

Fits onto aluminium shelf edges on the melamine shelves, or on the aluminium profile for glass shelves.

Allows for infinitely adjustable positioning of acrylic dividers.



**AP6756**

Clear plastic.

## ACRYLIC DIVIDERS

Slot into divider support clip. Clear acrylic with polished edges.



**AP6760** - 240mm x 60mm

**AP6761** - 300mm x 60mm

**AP6762** - 400mm x 60mm



**AP6765** - 240mm x 120mm

**AP6766** - 300mm x 120mm

**AP6767** - 400mm x 120mm

## GLASS SHELVES

6mm thick toughened glass with polished edges and front 2 corners with 10mm radius.

- |                               |                                |
|-------------------------------|--------------------------------|
| <b>AP4170</b> - 600mm x 250mm | <b>AP4177</b> - 900mm x 350mm  |
| <b>AP4171</b> - 600mm x 300mm | <b>AP4178</b> - 900mm x 450mm  |
| <b>AP4172</b> - 600mm x 350mm | <b>AP4180</b> - 1200mm x 250mm |
| <b>AP4173</b> - 600mm x 450mm | <b>AP4181</b> - 1200mm x 300mm |
| <b>AP4175</b> - 900mm x 250mm | <b>AP4182</b> - 1200mm x 350mm |
| <b>AP4176</b> - 900mm x 300mm | <b>AP4183</b> - 1200mm x 450mm |



## ALUMINIUM DIVIDER PROFILE

For glass shelves. Accepts divider support clips & Acrylic dividers.

Specially designed for use with decorative shelving brackets

- AP6372 (see p.16). Designed for 8mm thick glass

- may be used with 6mm glass with

double sided tape.



**AP6757** - 600mm

**AP6758** - 900mm

**AP6759** - 1200mm

Refer to divider support clip  
and acrylic dividers (p. B19).

## SOFT-FORMED TIMBER SHELF

With distinctive bullnosed frontedge to give you an upmarket feel - 25mm thick board in the full range of colours excluding "Roble" and "Wenge"



**AP6346** - 600mm x 400mm

**AP6347** - 900mm x 400mm

**AP6348** - 1200mm x 400mm

## INJECTION-MOULDED SHELF

The new plastic shelf in a frosted transparent finish provides exciting merchandising possibilities. Moulded in one piece plastic with strengthening ribs - virtually unbreakable.



**AP6336** - 610mm x 330mm

**AP6337** - 1220mm x 330mm

**AP6338** - 1220mm x 380mm

## GLASS SHELF BRACKET

Beautiful slimline bracket fastens onto glass shelf with grub screws underneath for a secure fixing.

Pitch - 50mm.



**AP6232** (Sold in pairs)

Available as raw steel (RAW)

or powdercoated to specification (P/C).



## ALUMINIUM TREADPLATE SHELF

Aluminium shelf with raised treadplate pattern providing the classic industrial look.



**AP6326** - 600mm x 400mm

**AP6327** - 900mm x 400mm

**AP6328** - 1200mm x 400mm





## ALIAS WALL SYSTEM

- The ALIAS system provides some exciting opportunities for free-standing or wall-mounted merchandising. Based on a system of concealed, slotted aluminium wall strips, we can provide you with a complete system with infill panels in plain melamine finish or PLANKWALL panels for additional merchandising flexibility.
- Aluminium strips can be mounted directly to the wall with infill panels mounted on with a hook-on system for an easily interchangeable back drop for your product display. This opens up some amazing concepts using lifestyle graphics to sell products with all the benefits of a fully functional display system.
- ALIAS slotted wall strips can also be attached to the back of a melamine panel and this panel then attaches to the wall with the same hook-on fitting. This method allows for faster installation as the wall strips don't require individual wall-fixing.
- A flat-pack free-standing gondola completes the versatility of the system while providing a harmonious display configuration.

## SINGLE SLOT CENTRE PROFILE

Pitch - 50mm.

**AP6500** - 2400mm  
Mill finish aluminium.



## SINGLE SLOT CENTRE PROFILE

Pitch - 50mm With extra lip - designed for retaining panels without clips.  
Requires groove in side of panels using slotting cutter.

**AP6600** - 2400mm  
Mill finish aluminium.



## SINGLE SLOT END PROFILE

Pitch - 50mm.

**AP6501** - 2400mm  
Mill finish aluminium.



## SINGLE SLOT END PROFILE

Pitch - 50mm With extra lip - designed for retaining panels without clips.  
Requires groove in side of panels using slotting cutter.

**AP6601** - 2400mm  
Mill finish aluminium.



## DOUBLE SLOT CENTRE PROFILE

Pitch - 50mm.

**AP6502** - 2400mm  
Mill finish aluminium.



## DOUBLE SLOT CENTRE PROFILE

Pitch - 50mm With extra lip - designed for retaining panels without clips.  
Requires groove in side of panels using slotting cutter.

**AP6602** - 2400mm  
Mill finish aluminium.



## PANEL SUPPORT - LEFT



**AP6510L**  
Clear plastic.



## CENTRAL PANEL SUPPORT

For single slot.



**AP6511**  
Clear plastic.



## PANEL SUPPORT - RIGHT



**AP6510R**  
Clear plastic.

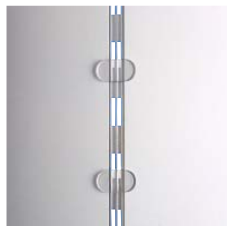


## CENTRAL PANEL SUPPORT

For double slot.



**AP6512**  
Clear plastic.



## MELAMINE INFILL PANEL

Plain melamine panel for "Alias" uprights.  
Use in conjunction with 2 pairs of AP6503  
hook-on wall fixings to allow for simple  
changing of colour schemes.



**AP6528** - 595mm (W) x 2400mm (H)

**AP6538** - 895mm (W) x 2400mm (H)

Available in standard colour range - specify colour.

## MELAMINE WALL PANEL

With 2 vertical "alias" single strips at 900mm spacings.  
Panel size - 1200mm (w) x 2400mm (H).



**AP6548**

Available in standard colour range - specify colour.

## GROOVED WALL PANEL

With grooves at 100mm centres.  
Recommend using with "Alias" uprights -  
AP6600/6601/6602.



**AP6628** - 595mm (W) x 2400mm (H)

**AP6638** - 895mm (W) x 2400mm (H)

## HOOK ON WALL FIXING

Pair of extrusions for attaching to wall  
andback of panel for easy hook-on  
attachment.



**AP6503** - 400mm long

## ALUMINIUM END PROFILE

Radiussed aluminium  
end entrusion.



**AP8100AN/8** - 2400mm

Natural anodised aluminium finish.

## ALUMINIUM GROOVE INSERT

'L' Profile.



**AP6620** - 595mm

**AP6630** - 895mm

Mill finish aluminium

## ALUMINIUM CORNER PROFILE

Radiussed aluminium corner etrusion.



**AP8110AN/8** - 2400mm

Natural anodised aluminium finish.



## GONDOLA FRAME

Chrome-plated bolt together frame for attaching panels on both sides. Frame ends are slotted for additional merchandising capabilities. Overall size - 1052mm (L) x 760mm (W) x 1475mm (H).



### AP6530

Available in chrome finish.

## MELAMINE GONDOLA PANEL

With 2 vertical "ALIAS" single strips at 900mm spacings. Includes fixings for mounting to gondola. Size - 1055mm (W) x 1425mm (H).



### AP6531

Available in standard colour range - specify colour.

## DECORATIVE PROFILE COVER

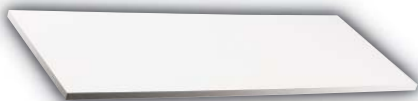
Use with AP6500 (single slot) or AP6502 (double slot) centre profile for a feature wall-mounted upright with concealed fixings.



**AP6605** - 2400mm. 2 required per upright - simply snaps onto wall strip once it is fixed to the wall. Finish - clear anodised aluminium.

## GONDOLA BASE SHELF

Melamine panel Size 1055mm x 400mm.



### AP6532

Available in standard colour range - specify colour.